



3/1 Ricketts Road MOUNT WAVERLEY, VIC

Affordable, Professional and Partitioned Office or Medical Suite

Suite 3, Ground Floor, "The Central" - Corner of Ricketts Road and Forster Road, Mount Waverley

- * 90 sqm ground floor office or medical suite
- * Regular shape for maximum efficiency
- * Front reception, two enclosed offices, separate boardroom, and the balance is open plan
- * Fully carpeted with ducted air conditioning
- * Internal kitchenette
- * Shared male and female bathrooms on the floor that are always clean and immaculate
- * 3 car parks on title, 1 of which is within the secure garage
- * Visitor car parks directly outside

Rent Reduction | \$495 Per Week Net

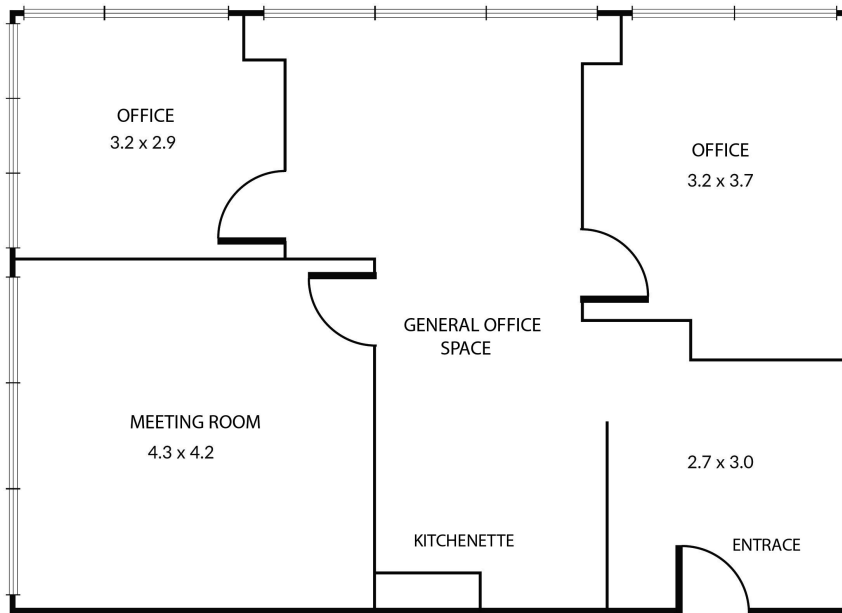
Type : Offices
Building Size : 90 m2
Zoning : Special Uses (Office)

Richard Impiombato Jackson Brenchley

0419688918

0431286661

3/1 Ricketts Road, Mount Waverley VIC



NOTE: Every precaution has been taken to verify the accuracy of the above details. However, prospective purchasers are advised to make their own enquiries.