

26/240 Plenty Road BUNDOORA, VIC

Fully Fitted Out Medical or Allied Health Suite

- * 78.5 sqm medical or allied health suite
- * On the second floor of modern, professional office and medical building
- * Classy lobby entry and common areas
- * Wheelchair friendly and elevator access
- * Front reception and waiting room area
- * 5 enclosed consulting rooms, each with an internal sink and basin plus cupboard space
- * 4 of the consulting rooms have vinyl flooring
- * Each consulting room has outside southerly and east-facing views
- * Separate lunch and staff room
- * Ducted air conditioning throughout
- * Shared M + F on the floor, that are clean and well presented
- * Ground floor cafe
- * Opposite Tram 86 route into the CBD

\$575 Per Week Net

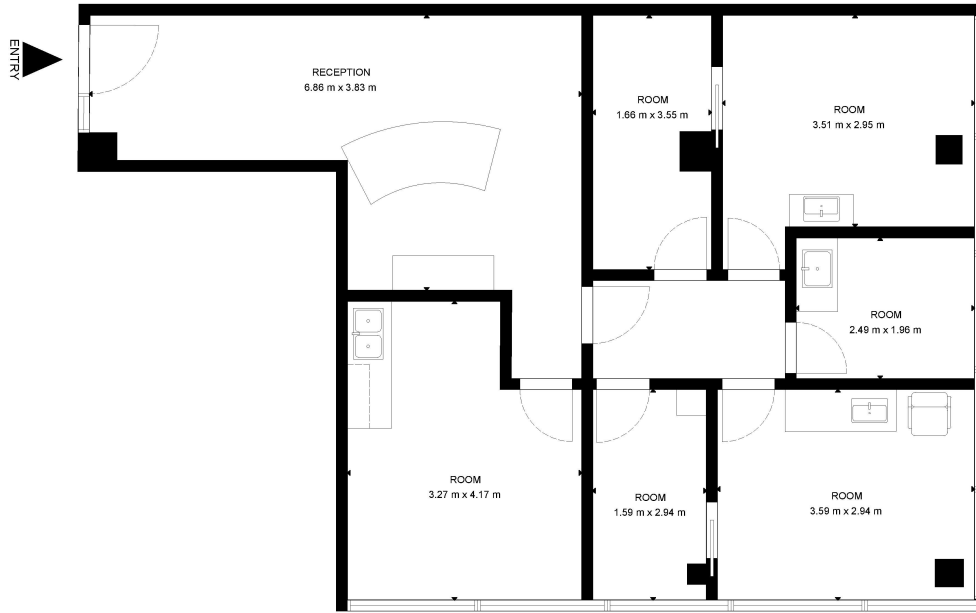
Type : Healthcare
Building Size : 78 m2
Zoning : Special Use - Schedule 3

Richard ImpiombatKeith Ncube

0419688918

0451050006

26/240 Plenty Road, Bundoora



GROSS INTERNAL AREA

TOTAL: 78,5 sq m

SIZE AND DIMENSIONS ARE APPROXIMATE, ACTUAL MAY VARY

modo
property