



1/2 Enterprise Drive BUNDOORA, VIC

Ground Floor Office Or Medical In Bundoora Hub

- * 135 sqm ground floor office or medical suite
- * Positioned at the entrance to the building
- * North east corner of the building, filled with natural light
- * Fully carpeted, and ducted air conditioning throughout
- * Partitioned with 2 x internal rooms (office and meeting room), front reception and waiting area, and balance open plan
- * Internal kitchenette
- * Regular shaped tenancy
- * Shared M + F on the floor, cleaned regularly
- * Sleek, contemporary three level office building on the corner of Plenty Road
- * Disabled access (ramp)
- * Directly on the Metropolitan Ring Road
- * Available immediately
- * Flexible inspection times

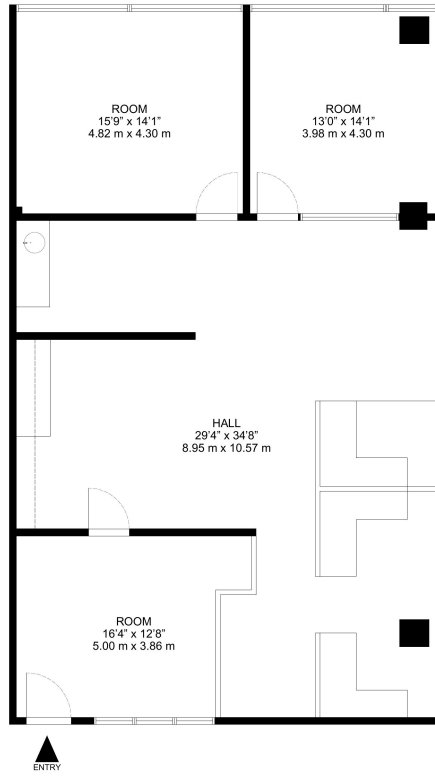
Asking \$40,500 Per Annum
Net

Type : Healthcare
Building Size : 135 m2
Zoning : Special Use, Schedule 3

Richard Impiombato

0419688918

1.2 enterprise Drive, bundoora



▲
ENTRY

GROSS INTERNAL AREA
FIRST FLOOR: 1442 sq ft, 134 sq m

SIZE AND DIMENSIONS ARE APPROXIMATE, ACTUAL MAY VARY

modo
property