



3/506 Mountain Highway WANTIRNA, VIC

Prominent 84 SQM Shop With Full Fitout For Foodies

- *?Ample customer parking (25+ shared parking bays)
- *?Boutique retail pocket
- *?2 Cool Rooms
- *?Commercial kitchen
- *?Serving counter
- *?Grease trap
- *?Generous in-house dining space
- *?1 M/F bathroom
- *?All equipment included
- *?Regular floor shape (see floorplan)
- *?Glass frontage
- *?Rear laneway access
- *?Plenty of natural light
- *?Plenty of nearby businesses (50+) on Stud Road, Ricdanic Drive, Havelock Road and Michel

Asking \$2,750 Per Month Net

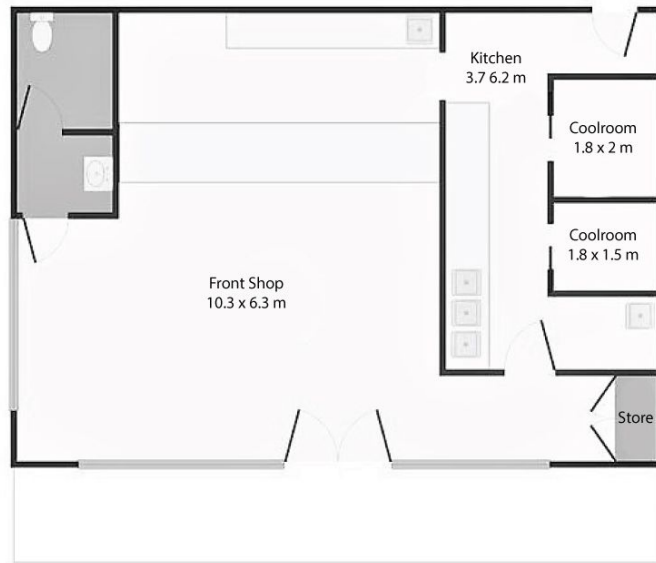
Type : Retail
Building Size : 84 m²
Zoning : Commercial 1

Rachel Dart

0425 852 821

Building Area: 84 sqm

3/506 Mountain Highway, Wantirna VIC 3152



NOTE: Every precaution has been taken to verify the accuracy of the above details. However, prospective purchasers/tenants are advised to make their own enquiries.