



5/61 The Gateway BROADMEADOWS, VIC

City Views | Affordable And Secure Office Suite | \$275 Per Week GROSS

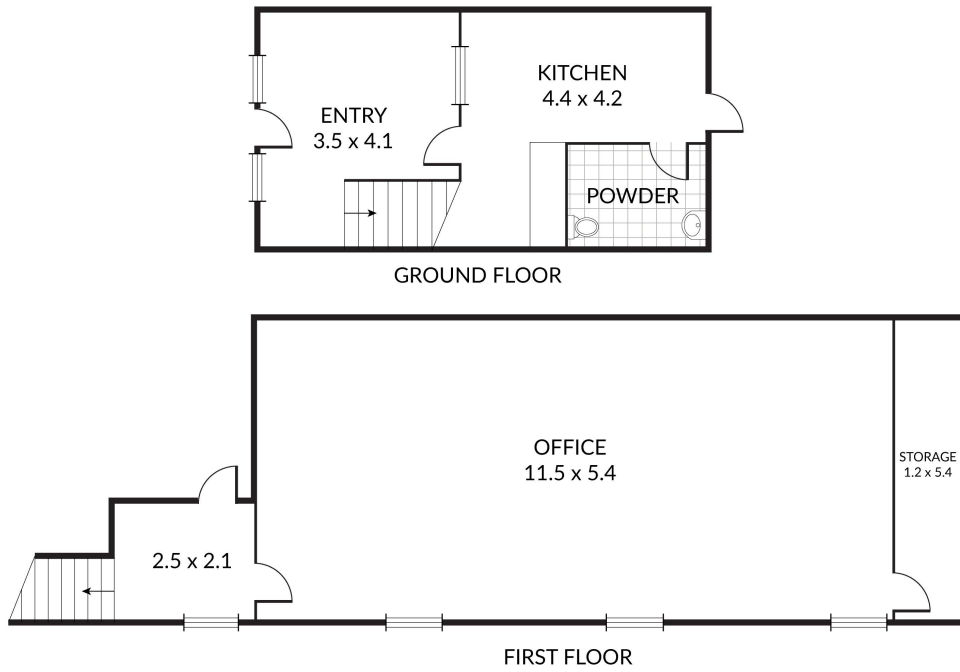
- * All outgoings included in gross rental, except for electricity and internet consumption
- * Level 1 office, south facing, CBD views
- * Freshly painted and cleaned, fully carpeted
- * Light and airy, abundant natural light
- * Split cycle air conditioner
- * Open plan
- * Storage / filing room
- * Ample power points
- * Ground level entry with shared bathroom and kitchenette
- * Partitioned and locked level one office for privacy
- * Superb location, just off Sydney Road and Metropolitan Ring Road
- * Surrounded by local amenity

Cheap Gross Rent With City Views

Type : Offices
Building Size : 68.5 m2

Richard Impiombato

0419688918



NOTE: Every precaution has been taken to verify the accuracy of the above details. However, prospective purchasers are advised to make their own enquiries.